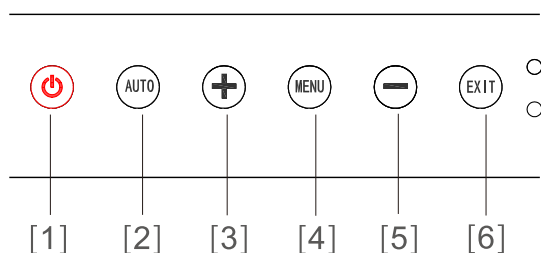


# Marine Color LCD Monitor

Model: HM-2624



## Keypad Functions



- [1] **[Power] key**: To turn ON/OFF the monitor, but the core board still working.
- [2] **[AUTO] key**: Automatically adjust to the center display; or return to the previous menu.
- [3] **[+] key**: Menu to move up, adjust the volume or adjust brightness.
- [4] **[MENU] key**: See the details behind.
- [5] **[-] key**: Menu down, adjust the volume or adjust brightness.
- [6] **[EXIT] key**: Exit from current menu, or back to the previous menu.

## Features

- ▶ LED backlight with a higher brightness and wide angle of view, 1920X1200(WUXGA) resolution.
- ▶ Support multi-language.
- ▶ Support VGA, DVI, HDMI interface.
- ▶ Use knob to adjust brightness, it is more convenient to operate.
- ▶ Support countertop and flush instal.



# Specifications

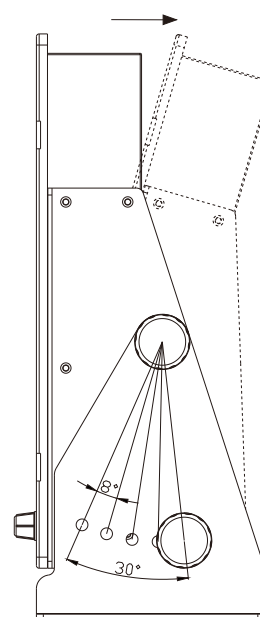
[Unit: mm]

Display Unit	HM-2624
Display Type	Color TFT LCD
Screen Size	24 inch (518.4mm×324mm)
Display Resolution	1920×1200(WUXGA) pixels
Colors	16.7M
Screen Brightness	600cd/m <sup>2</sup>
Viewing Angle	Horizontal: 178° Vertical: 178°
Contrast Ratio	1000:1
Video Input	VGA; DVI; HDMI
Operating Temperature	-15°C~ +55°C
Storage Temperature	-20°C~ +60°C
Power Supply	AC110V/AC220V
Compatible Resolution	1920*1200;1680*1050; 1440*900...
Menu Language	English,Simplified Chinese,German,Italian, French,Spanish,Portuguese,Korean
Standards	IEC 60950-1; ETSI EN 301 489-3 V1.4.1; IEC 60529; ETSI EN 300 440-2 V1.4.1; ETSI EN 300 440-1 V1.6.1

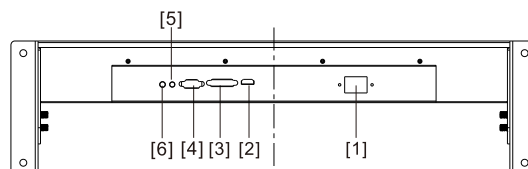
## Packing List

Main Unit×1set	Power Cable ×1 pc
VGA Cable ×1 pc	User's Manual ×1 pc
Mounting Bracket×2pcs	Wood Screw ×4 pcs
Mounting Bracket Screw (L) × 2 sets	
Mounting Bracket Screw (S) × 2 sets	

## » Perspective Adjustment

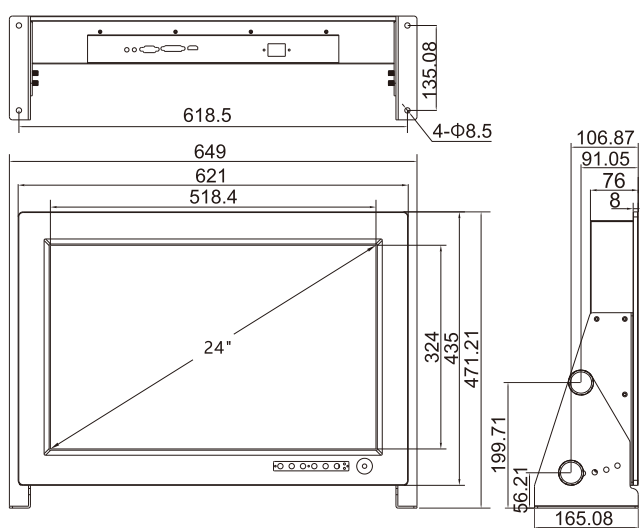


## » Interface Definition

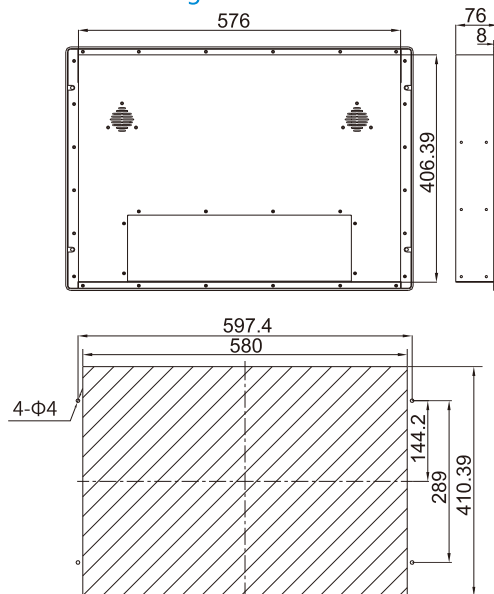


[1] POWER [2] HDMI [3] DVI [4] VGA  
[5] AUDIO INPUT [6] AUDIO OUTPUT

## » Display Unit Counter Mounting



## Flush Mounting



Flush mounting hole size drawing