

17" Marine GNSS Chart Plotter

Model: HM-1817

Support Internal Chart & C-MAP (MAX) Card



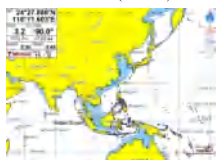
Features

- ▶ Passed the EU CE certification.
- ▶ 17 inch color LCD with 1280 x 1024 resolution, wide angle of view.
- ▶ Support Internal Chart and C-MAP(MAX) dual chart system.
- ▶ Classic& Utility dual operating system, you can switch freely.
- ▶ Built-in BDS, GPS dual-mode high-precision positioning module, the position information is stable and reliable.
- ▶ Support multi-language display, such as Chinese, English, Korean, etc.
- ▶ Many display pages can be chose and switched freely.
- ▶ Support external XINUO remote-control keypad, more convenient and efficient.
- ▶ Connect to mobile network to upgrade software online.
- ▶ Install in intelligent voice to broadcast operation View content, alarm content, etc.

Internal Chart



C-MAP (MAX)

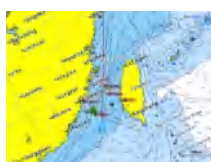


Multi Display Modes

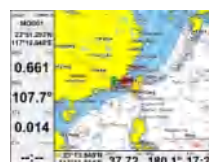
Choose Your Favorite Operating Interface



Standard Chart View



Pure Chart View



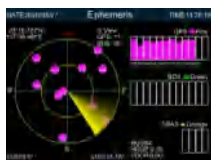
Simple Chart View



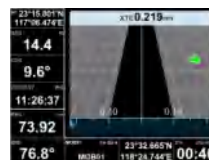
AIS Data



Sailing Data



GNSS



3D Navigation



Compass

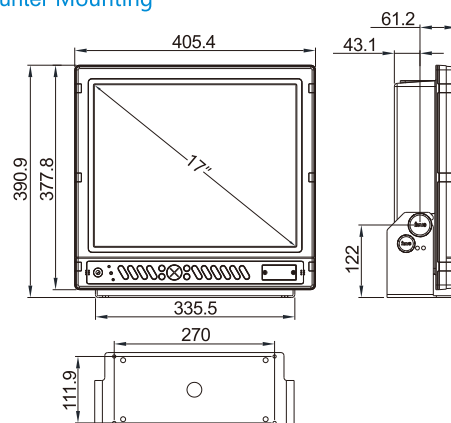
[Unit: mm]

» System Connection Diagram and Serial Port Definition

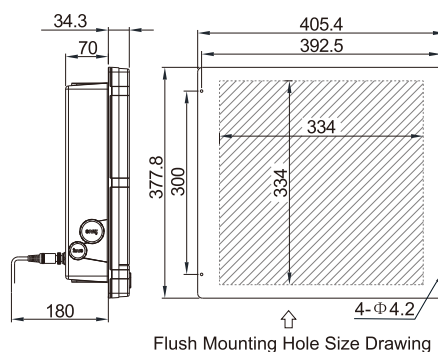


Counter Mounting

Weight: 5.5kg, 12.12lb



Flush Mounting



Antenna Unit (12m)

GNSS Antenna

Antenna Holder (Optional)

XINUO

Address: Unit 2001, 1 Chengyi North Street (B04), Software Park III, Xiamen, China
Tel: +86-592-3300300 Fax: +86-592-3300310 Hotline: 400-8868-592
Web: <http://www.xinuo.com> Email: info@xinuo.com



NEEQ:836189