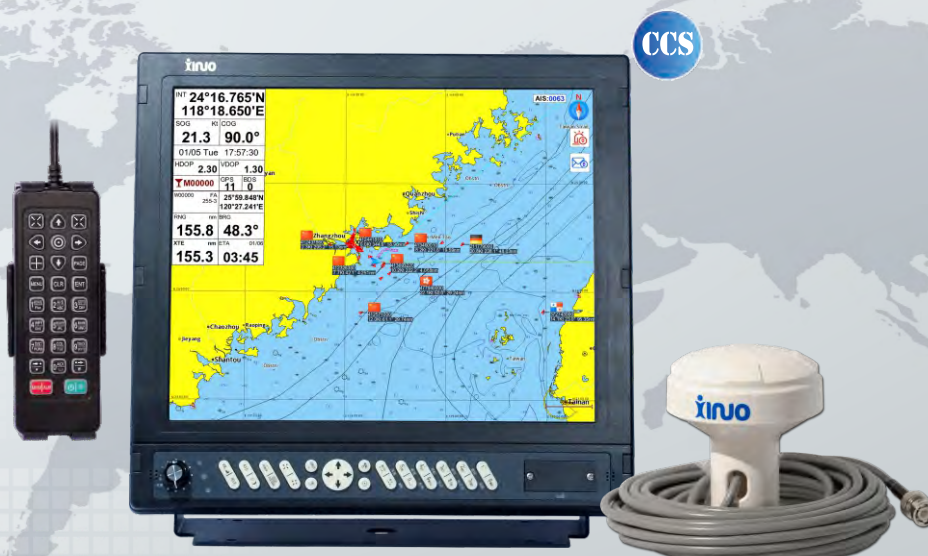


17" AIS Class B & GNSS Chart Plotter

Model: HM-5917

Support Internal Chart & C-MAP (MAX) Card

Passed the EU CE certification, China Classification Society CCS type approval



Features

- ▶ 17 inch Color LCD with 1280 x 1024 resolution, wide angle of view.
- ▶ Support Internal Chart and C-MAP(MAX) dual chart system, Classic & Practical two menu operation style for selection, users can switch automatically.
- ▶ Built-in Class B AIS module, with perfect AIS function. It can timely respond to regulatory instructions.
- ▶ Intelligent CPA alarm calculation mechanism can avoid outdated and ineffective alarms.
- ▶ Support to making ships being in a group to manage, and can set multiple alarm, such as anchor alarm, leave out alarm, etc.
- ▶ Connect to mobile network to upgrade software online.
- ▶ Install in intelligent voice to broadcast operation content, alarm content, etc.
- ▶ Support external XINUO remote control keypad, more conveniently for operation.
- ▶ Intelligent brightness adjustment works by encoder button.
- ▶ Extenal speaker supporting improves user experience.

Internal Chart



C-MAP(MAX)



Multi Display Modes

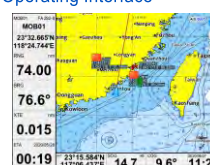
Choose Your Favorite Operating Interface



Standard Chart View



Pure Chart View



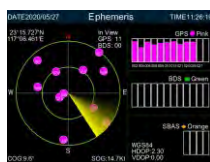
Simple Chart View



AIS Data



Sailing Data



GNSS



3D Navigation



Compass

Specifications

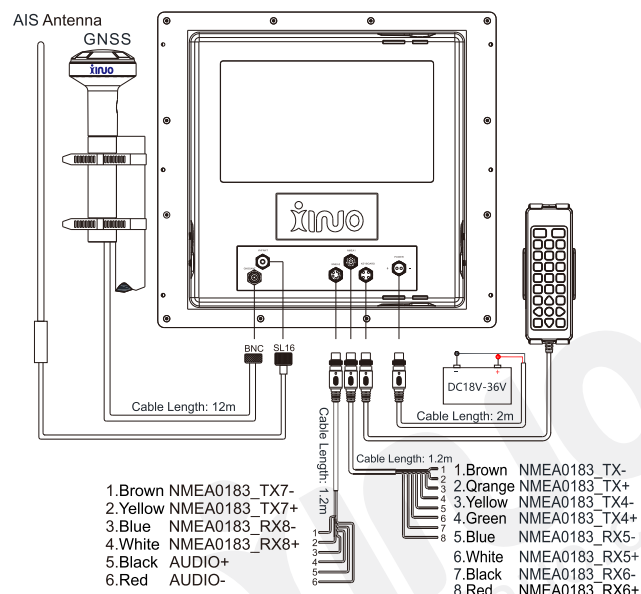
[Unit: mm]

Display Unit		HM-5917
Display Type		Color TFT LCD
Display Size		17 inch
Display Resolution		1280×1024pixels
Display Brightness		400cd/m²
Language		Classic mode: English, Simplified Chinese, Traditional Chinese, Vietnamese
		Utility mode: English, Simplified Chinese, Traditional Chinese, Vietnamese, Malay, Korean, Turkish, Thai, Greek, Indonesian, Japanese, Myanmar, Arabic, Persian, Spanish, French
Display Modes		Classic mode: Standard Chart, GPS data, AIS data, Navigation Chart, Full Chart, 3D Navigation, 3D+Chart, Compass, GNSS
		Utility mode: Standard Chart, Pure Chart, Simple Chart, AIS Data, Sailing Data , GNSS, 3D Navigation, Compass
Memory Capacity		50,000 waypoints, 50,000 markers, 500 routes, one route can indicate 200 waypoints , 1000 tracks, 1,600,000 track points
Interface		AIS Output 1 Ports, NMEA 0183 Output 2 Ports, NMEA 0183 Input 3 Ports (Mutual independent, Baud rate can be set indenptly)
WiFi		802.11 b/g/n
Power Supply		DC18V~36V
Power Consumption		18W or less (24 VDC)
Enviromental		
Working Temperature		-15℃～+55℃
Storage Temperature		-20℃～+60℃
Waterproofing		IP65
AIS Class B		
Frequency		156.025MHz ~ 162.025MHz
Bandwidth		25kHz
Modulation		GMSK / FM
Data Rate		9,600 bps
Number of AIS transmitter		1
Number of AIS Receiver		2 (Contains A and B channels)
AIS Channel A(default)		CH87B(161.975MHz)
AIS Channel B(default)		CH88B(162.025MHz)
TX Power Output		2 W
RX Sensivity		< -107 dBm @ 20% PER
GNSS		
GNSS Receiver		72 channels
Receive Frequency		GPS L1 1575.42MHz, BDS B1 1561.098MHz
Accuracy	GPS&BDS	2.5m (CEP50% open sky)
	GPS	5m (CEP50% open sky)
	BDS	5m (CEP50% open sky)
Speed Accuracy		0.1m/s (50%@10m/s)
Time to First Fix		Cold Start<30s, Hot Start<1s
Standards		IEC 62287-1, IEC 61108-1, IEC 61162-1, IEC 60945, ITU-R M.1371-5, IMO Resolution A.694(17)

Packing List

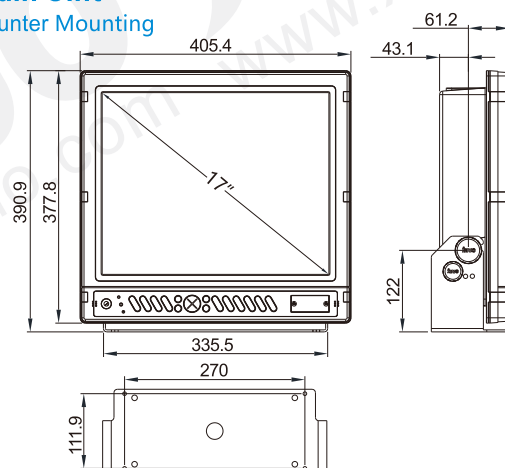
Name	Quantity	Name	Quantity
Display	1	8-Pin Data Line (1.2m)	1
Bracket	1	6-Pin Data Line (1.2m)	1
M8 Knob	2	GNSS Antenna	1
M6 Knob	2	ST4.8*20 Screw	4
Rubber Gasket For M8 Knob	4	Remote Control	1
Rubber Gasket For M6 Knob	4	Remote Control Bracket	1
Power Cable (2m)	1	Quick Reference	1

System Connection Diagram and Serial Port Definition

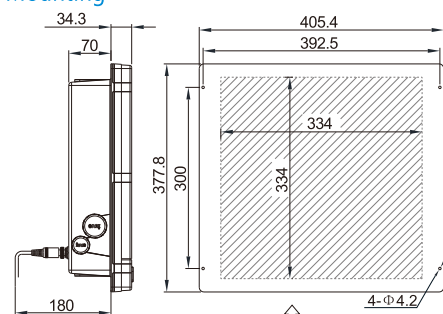


Main Unit

Counter Mounting

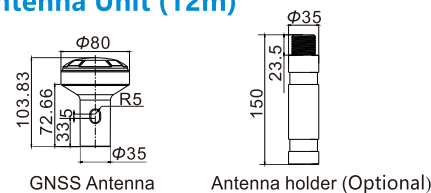


Flush Mounting



Flush Mounting Hole Size Drawing

GNSS Antenna Unit (12m)



Dealer:



WWW.XINUO.COM

Xinuo Information Technology (Xiamen) Corporation Limited