

# Marine GNSS Compass

Model: SC-500(III)



## Features

SC-500 (III) GNSS satellite compass uses advanced satellite electronic navigation technology, which can provide high-precision positioning and heading data for marine navigation equipment, such as autopilots, echo sounder, radar, chart plotter, Class B AIS, etc. SC-500 (III) consists of antenna, data control box and display. Support stable heading data output and easy to operate.

### ► Data Control Box

- ◆ 4 NMEA 0183 output, 2 AD-10 and 1 alarm data are able to connect to radar, autopilot, etc.
- ◆ LED displays real-time heading data.

### ► Display Unit

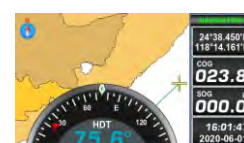
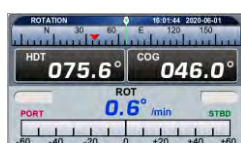
- ◆ 5 inch 480\*272 resolution, wide viewing angle.
- ◆ 1 AD-10 data interface.
- ◆ Support table, embedded and ceiling installation.
- ◆ Support many display modes for freely selection and switching.
- ◆ Built-in global chart, enjoy regular update service.

### ► GNSS Antenna

- ◆ The GNSS antenna can work independently, support 1 NMEA 0183 output.
- ◆ HDG output frequency is up to 20Hz.
- ◆ Follow the standards of ISO 22090-3, IEC 60945, IEC 62288, IEC 61162-1, IEC 61162-2.

## Different Display Modes for Selection

You can choose a suitable and comfortable display modes according to your actual requirement.



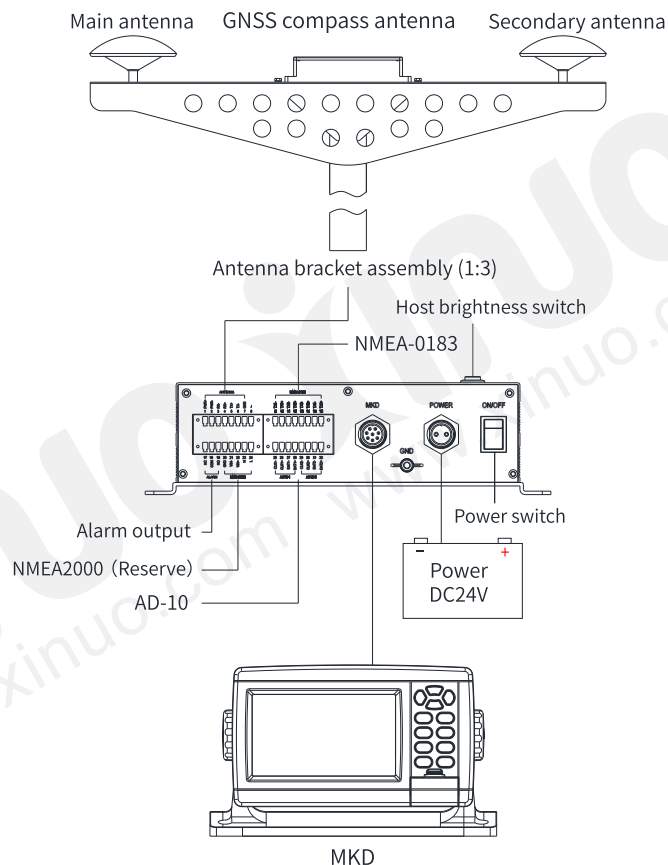
# Specifications

[Unit: mm]

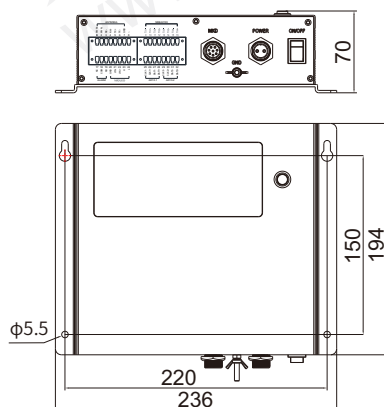
Display Unit	SC-500 ( III )
Display Type	Color TFT LCD
Display Size	5 inch
Display Resolution	480 × 272 pixels (WQVGA)
Display Brightness	400cd/m <sup>2</sup>
Language	English, Simplified Chinese
Display Modes	Compass, HDG, Heading, Rotation, Roll+pitch, Navigation
Chart	Internal Chart
Power Supply	DC18V-36V
Power Consumption	8W or less (24 VDC)
Enviromental	
Working Temperature	-30°C~+70°C
Storage Temperature	-40°C~+85°C
Waterproofing	GNSS Compass Antenna: IP67; MKD: IP65; Junction Box: IP42
GNSS Receiver	
Receiver Frequency	BDS B1/B2, GPS L1/L2
GNSS Receiver	432 channels
Update Rate	Heading, up to 20Hz. Location, up to 20Hz
Accuracy	Horizontal, 1.5m (95%). Elevation, 2.5m (95%)
Coordinate Systems	WGS84 (and others)
Heading Accuracy	0.2°rms
Speed Accuracy	0.03m/s rms
Pitch accuracy	<1°rms
Roll Accuracy	<1° rms
Rate of Turn	Up to 90°/S
Time to First Fix	Cold Start <25s, Hot Start <10s, Signal Re-acquisition <1s
Compass Safe Distance	<0.6m

Packing List			
Name	Quantity	Name	Quantity
GNSS Compass Antenna	1	T-bracket	1
Junction Box	1	Antenna data line(20m)	1
MKD Display Unit	1	User's Manual	1
Accessory Package	1		

## » Interface Diagram

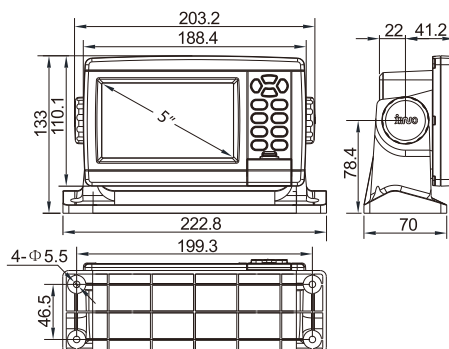


## » Junction Box

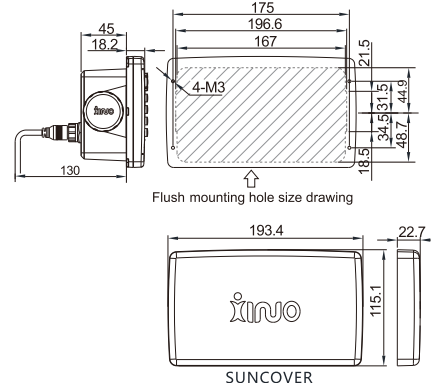


## » MKD

### Counter Mounting



### Flush Mounting



Dealer:



WWW.XINUO.COM

Xinuo Information Technology (Xiamen) Corporation Limited